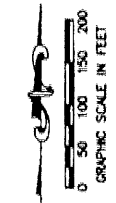


# MIRASOL PLAT ONE

PART OF GOLF DIGEST P.C.D.  
SITUATE IN SECTIONS 33 AND 34, TOWNSHIP 41 SOUTH, RANGE 42 EAST,  
AND SECTIONS 3 AND 4, TOWNSHIP 42 SOUTH, RANGE 42 EAST,  
CITY OF PALM BEACH GARDENS,  
PALM BEACH COUNTY, FLORIDA  
MARCH, 2000 SHEET 3 OF 10

16

- LEGEND**
- L ARC LENGTH
  - AE ACCESS EASEMENT
  - BE BUFFER EASEMENT
  - Δ CENTRAL (DELTA) ANGLE
  - CCB CIRCUIT COURT BOOK
  - CH CHORD
  - (C) CALCULATED
  - (D) DEED
  - DB DEED BOOK
  - DE DRAINAGE EASEMENT
  - ESMT EASEMENT
  - FPL FLORIDA POWER AND LIGHT
  - IEE INGRESS/EGRESS EASEMENT
  - LAE LIMITED ACCESS EASEMENT
  - LME LAKE MAINTENANCE EASEMENT
  - LMAE LAKE MAINTENANCE ACCESS EASEMENT
  - LSE LIFT STATION EASEMENT
  - (NR) NON-RADIAL
  - NUMBER
  - PCD PLANNED COMMUNITY DEVELOPMENT
  - ORB OFFICIAL RECORD BOOK
  - PB PLAT BOOK
  - PG(S) PAGE(S)
  - RADIUS
  - RFB ROAD PLAT BOOK
  - SLE SEWER LINE EASEMENT
  - SUA SEACOAST UTILITY AUTHORITY
  - (TYP) TYPICAL
  - UE UTILITY EASEMENT
  - WLE WATER LINE EASEMENT
  - WSE WATER AND SEWER EASEMENT
  - PERMANENT REFERENCE MONUMENT
  - SET LB-048
  - PERMANENT CONTROL POINT
  - SET LB-048
  - CENTERLINE



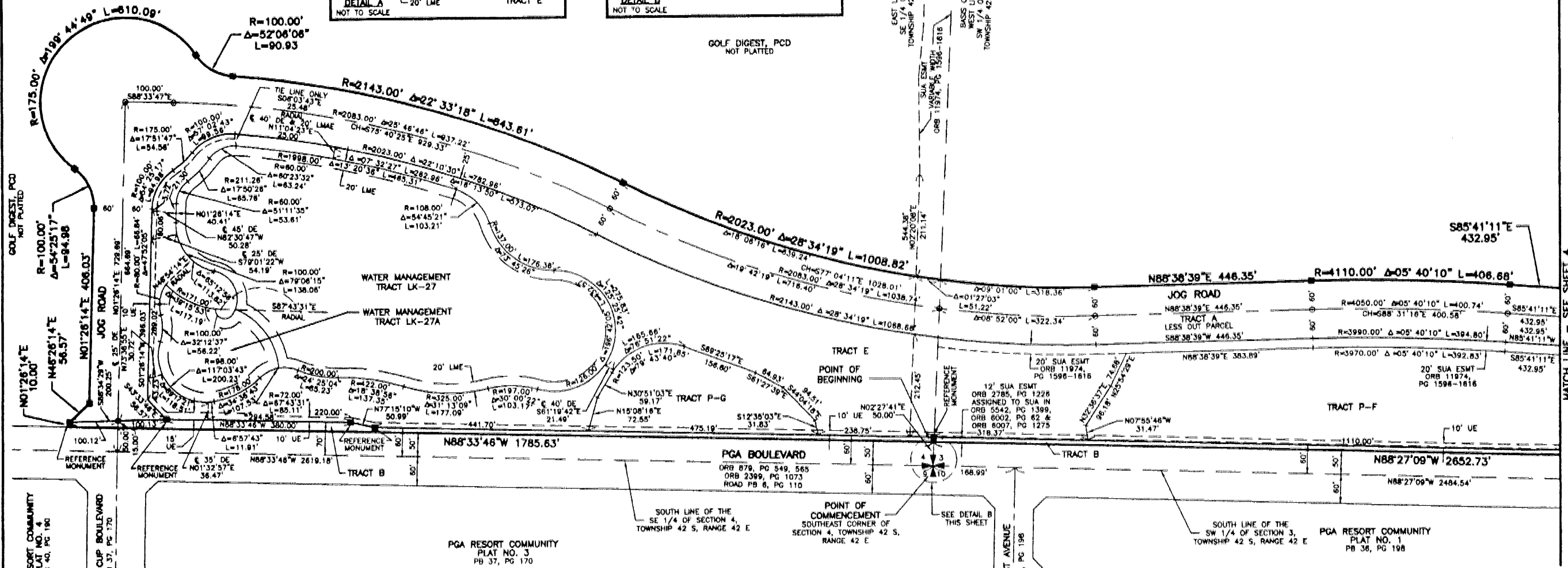
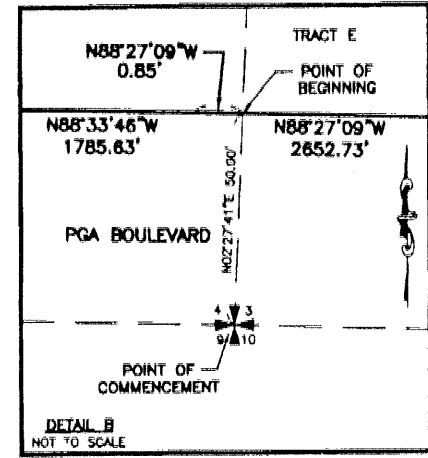
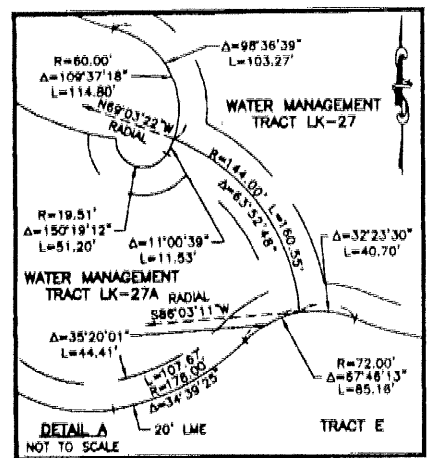
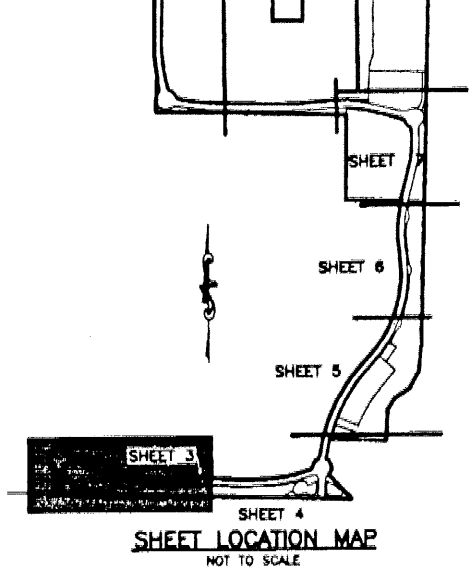
STATE OF FLORIDA  
COUNTY OF PALM BEACH

THIS PLAT WAS FILED FOR  
RECORD \_\_\_\_\_ DAY OF \_\_\_\_\_  
AD. 2000 AND DULY RECORDED  
IN PLAT BOOK \_\_\_\_\_ ON PAGES  
\_\_\_\_\_ AND \_\_\_\_\_

DOROTHY H. WILKEN, CLERK  
BY: \_\_\_\_\_, D.C.

CIRCUIT COURT SEAL

SHEET 10 SHEET 9 SHEET 8



PGA RESORT COMMUNITY PLAT NO. 4 PB 40, PG 190

REV. 09-26-00  
CAD FILE:  
TAYLOR\GOLF\RF02

THIS INSTRUMENT WAS PREPARED BY MARY HANNA CLODFELTER, P.S.M. IN THE OFFICES OF MOCK, ROOS & ASSOCIATES, INC., 5720 CORPORATE WAY, WEST PALM BEACH, FLORIDA 33407.

SCALE: 1" = 100'	FLORIDA L.B. NO. 48
P.A. NO.: 99310.00	<b>MOCK ROOS</b> ENGINEERS, ARCHITECTS & PLANNERS
DATE: MARCH, 2000	
DRAWING NO.: 41-42-33-18	5720 Corporate Way, West Palm Beach, Florida 33407 (561) 663-3113, fax 478-7248

**MIRASOL PLAT ONE**  
PART OF GOLF DIGEST P.C.D.  
SITUATE IN SECTIONS 33 AND 34,  
TOWNSHIP 41 SOUTH, RANGE 42 EAST,  
AND SECTIONS 3 AND 4,  
TOWNSHIP 42 SOUTH, RANGE 42 EAST,  
CITY OF PALM BEACH GARDENS,  
PALM BEACH COUNTY, FLORIDA

SHEET 3 OF 10